

# DOL Series

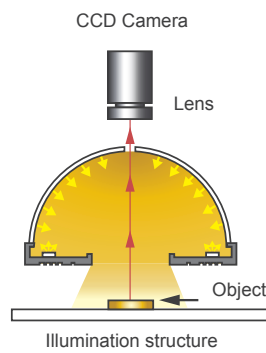
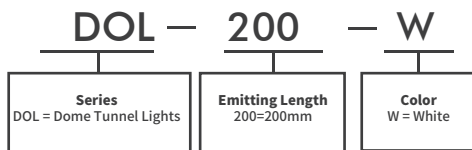
## Dome Tunnel Lights



### ◆ Product Features

- Ideal for high speed & high resolution Line Scan imaging
- Diffused light source with high brightness and high uniformity
- Provides big area illumination and excellent shadow-free effect
- Suitable for high reflective & uneven surface defect inspection

### ◆ Model Guide

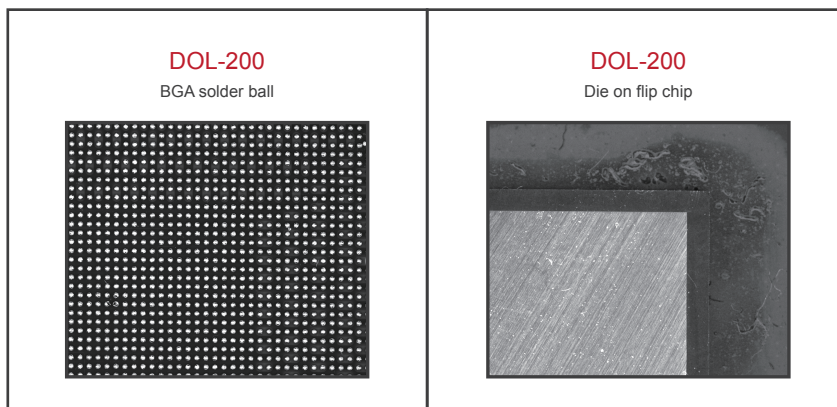


### ◆ Specification Table

| Model   | Color   | Current / Power | No. of Channel | Dimensions (mm) |       |        | Diagrams |
|---------|---------|-----------------|----------------|-----------------|-------|--------|----------|
|         |         |                 |                | Length          | Width | Height |          |
| DOL-100 | ● ● ● ○ | 0.2A / 12W      | 2              | 125             | 106   | 56     | 1        |
| DOL-150 | ● ● ● ○ | 0.25A / 18W     | 2              | 175             | 106   | 56     | 2        |
| DOL-200 | ● ● ● ○ | 0.35A / 24W     | 2              | 225             | 106   | 56     | 3        |
| DOL-300 | ● ● ● ○ | 0.5A / 36W      | 2              | 325             | 106   | 56     | 4        |
| DOL-400 | ● ● ● ○ | 0.7A / 48W      | 2              | 425             | 106   | 56     | 5        |
| DOL-500 | ● ● ● ○ | 0.9A / 60W      | 2              | 525             | 106   | 56     | 6        |

※ Only operated by constant current LED driver, and please pay attention to rated current

### ◆ Case Pictures



### ◆ Dimensional Drawing

(mm)

