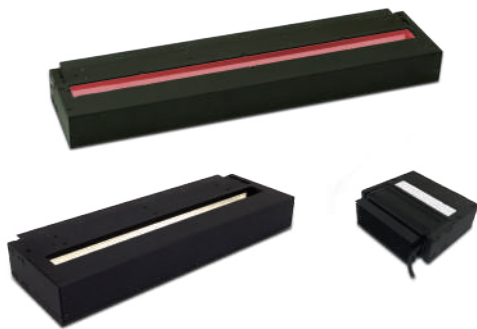
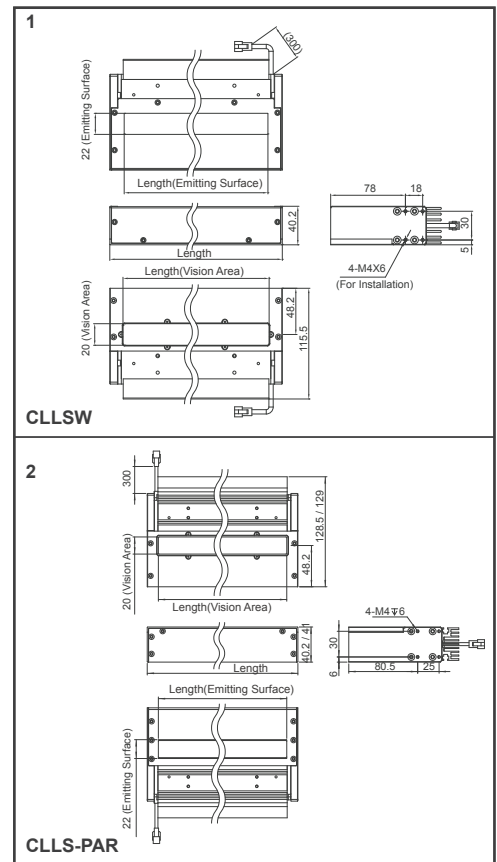


CLLSW/CLLS-PAR Series

Coaxial Fanless High Brightness Linear Lights

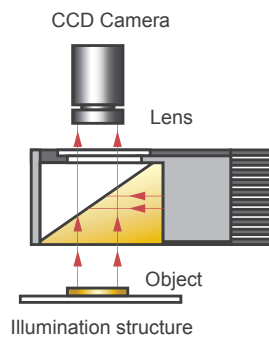


◆ Dimensional Drawing (mm)

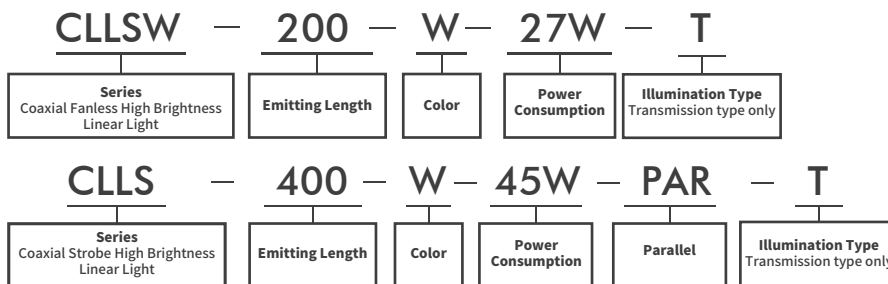


◆ Product Features

- Suitable for high speed / high definition Line Scan imaging
- Higher brightness : LLS-PAR series > 500K Lux ; LLSW series > 1M Lux
- Best light efficiency, no need for cooling fan for more convenient installation
- Provide over drive strobe to reach 2X brightness



◆ Model Guide



◆ Specification Table

Model	Color	Current / Power	No. of Channel	Dimensions (mm)			Diagrams
				Length	Width	Height	
CLLSW-100	● ● ● ○	0.5A / 16W	1	130	115.5	40.2	1
CLLSW-150	● ● ● ○	0.5A / 20W	1	180	115.5	40.2	1
CLLSW-200	● ● ● ○	0.5A / 27W	2	230	115.5	40.2	1
CLLSW-300	● ● ● ○	0.5A / 33W	2	330	115.5	40.2	1
CLLSW-400	● ● ● ○	0.75A / 45W	2	430	115.5	40.2	1
CLLSW-500	● ● ● ○	0.75A / 54W	2	530	115.5	40.2	1

Model	Color	Current / Power	No. of Channel	Dimensions (mm)			Diagrams
				Length	Width	Height	
CLLS-100-PAR	● ● ● ○	0.5A / 16W	1	130	129	41	2
CLLS-150-PAR	● ● ● ○	0.5A / 20W	1	176	128.5	41	2
CLLS-200-PAR	● ● ● ○	0.5A / 27W	2	230	129	41	2
CLLS-300-PAR	● ● ● ○	0.5A / 33W	2	330	129	41	2
CLLS-400-PAR	● ● ● ○	0.75A / 45W	2	430	129	41	2
CLLS-500-PAR	● ● ● ○	0.75A / 54W	2	530	129	40.2	2

※ Only operated by constant current LED driver, and please pay attention to rated current