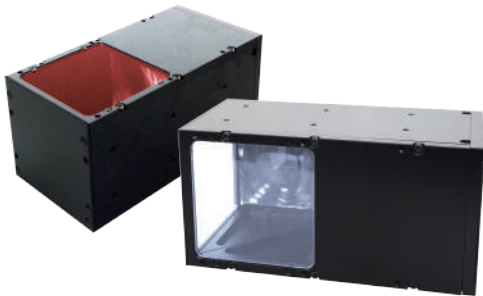


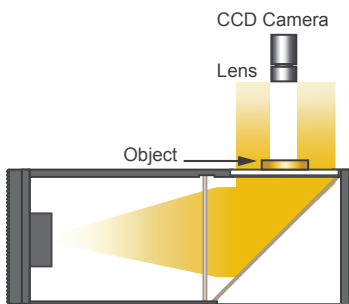
# PBCL Series

## Parallel Coaxial Backlights



### Product Features

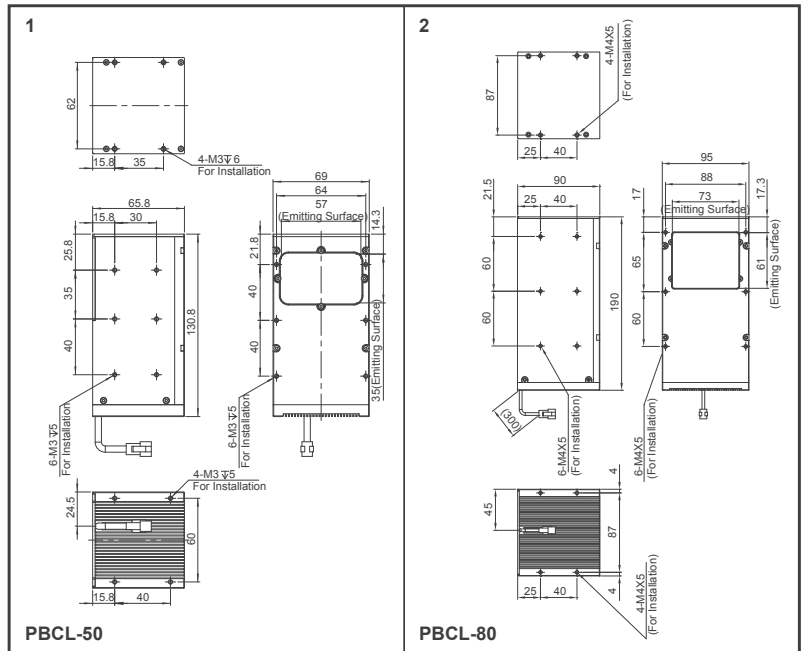
- Provide high level of parallel light beam, divergent angle is less than  $\pm 1$  degree
- Easier to take high contrast pictures for contour analysis
- Illumination difference is less than 5% at 200mm working distance



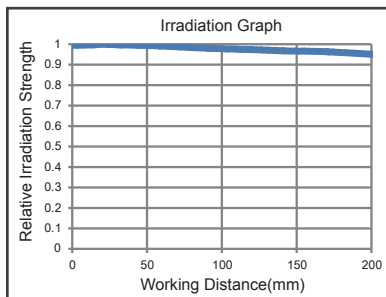
Illumination structure

### Dimensional Drawing

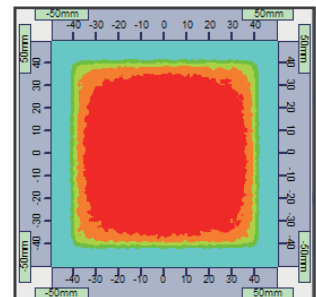
(mm)



### Illumination Analysis

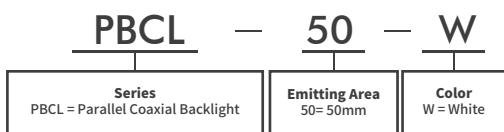


Working Distance vs Relative Illumination



Transverse Illumination

### Model Guide



### Specification Table

Model	Color	Current / Power	Dimensions (mm)			Diagrams
			Length	Width	Height	
PBCL-50	● ● ● ○	0.5A / 6W	130.8	69	65.8	1
PBCL-80	● ● ● ○	1.5A / 5W	190	95	90	2

※ Only operated by constant current LED driver, and please pay attention to rated current

### Case Pictures

