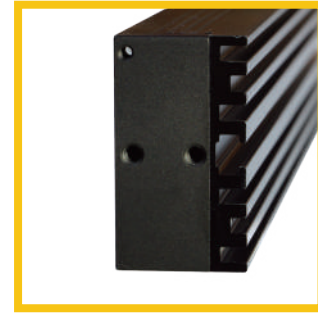


# REC2 Series

## Bar Lights

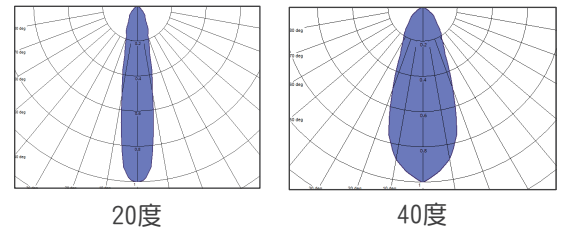
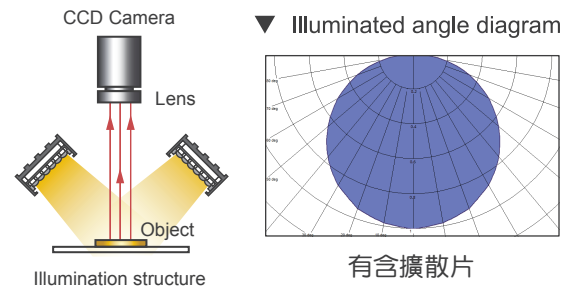
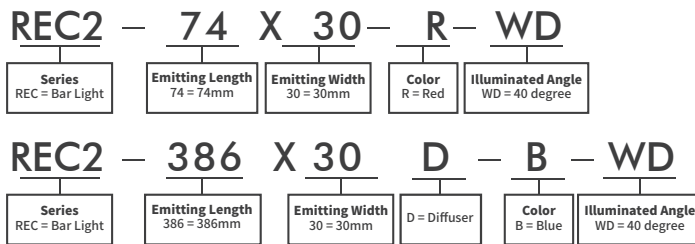


▲ Back cooling plate of REC2

### ◆ Product Features

- High density SMD LED, high uniformity, high brightness
- Use special optical lens to effectively change LED irradiation angle
- Use standard mold to insure assembly stability and quality
- Customized emitting area, wavelength and color temperature
- Optional diffuse board and lens angle available

### ◆ Model Guide



### ◆ Specification Table

Model	Voltage	Color	Power (W)		Dimensions (mm)			Diagrams
			●	●●○	Length	Width	Height	
REC2-41X16	24V	●●●○	1	1.5	53	20	19	1
REC2-80X16	24V	●●●○	2	2.5	92	20	19	2
REC2-119X16	24V	●●●○	3	4	131	20	19	3
REC2-158X16	24V	●●●○	4	6	170	20	19	4
REC2-197X16	24V	●●●○	5	6.5	209	20	19	5
REC2-74X30	24V	●●●○	3.5	5	86	34	19	6
REC2-98X30	24V	●●●○	4.8	6	110	34	19	7
REC2-146X30	24V	●●●○	7.2	10	158	34	19	8
REC2-170X30	24V	●●●○	8.4	11	182	34	19	9
REC2-194X30	24V	●●●○	9.5	12	206	34	19	10
REC2-218X30	24V	●●●○	10.7	15	230	34	19	11
REC2-266X30	24V	●●●○	13	17	278	34	19	12
REC2-290X30	24V	●●●○	14.2	18	302	34	19	13
REC2-386X30	24V	●●●○	19.2	24	398	34	19	14
REC2-434X30	24V	●●●○	21.5	30	446	34	19	15
REC2-578X30	24V	●●●○	28.8	36	590	34	19	16

◆ Dimensional Drawing

(mm)

<p><b>1</b></p> <p>Hex Nut M3 Groove For Installation</p> <p>2-M3<math>\times</math>3 Same In The Opposite For Installation</p> <p><b>REC2-41X16</b></p>	<p><b>2</b></p> <p>Hex Nut M3 Groove For Installation</p> <p>2-M3<math>\times</math>3 Same In The Opposite For Installation</p> <p><b>REC2-80X16</b></p>
<p><b>3</b></p> <p>Hex Nut M3 Groove For Installation</p> <p>2-M3<math>\times</math>3 Same In The Opposite For Installation</p> <p><b>REC2-119X16</b></p>	<p><b>4</b></p> <p>Hex Nut M3 Groove For Installation</p> <p>2-M3<math>\times</math>3 Same In The Opposite For Installation</p> <p><b>REC2-158X16</b></p>
<p><b>5</b></p> <p>Hex Nut M3 Groove For Installation</p> <p>2-M3<math>\times</math>3 Same In The Opposite For Installation</p> <p><b>REC2-197X16</b></p>	<p><b>6</b></p> <p>Hex Nut M3 Groove (For Installation)</p> <p>4-M3 depth 4</p> <p><b>REC2-74X30</b></p>
<p><b>7</b></p> <p>Hex Nut M3 Groove (For Installation)</p> <p>4-M3 depth 4 (For Installation)</p> <p><b>REC2-98X30</b></p>	<p><b>8</b></p> <p>Hex Nut M3 Groove (For Installation)</p> <p>4-M3 depth 4 (For Installation)</p> <p><b>REC2-146X30</b></p>
<p><b>9</b></p> <p>Hex Nut M3 Groove (For Installation)</p> <p>4-M3 depth 4 (For Installation)</p> <p><b>REC2-170X30</b></p>	<p><b>10</b></p> <p>Hex Nut M3 Groove (For Installation)</p> <p>4-M3 depth 4 (For Installation)</p> <p><b>REC2-194X30</b></p>
<p><b>11</b></p> <p>Hex Nut M3 Groove (For Installation)</p> <p>4-M3 depth 4 (For Installation)</p> <p><b>REC2-218X30</b></p>	<p><b>12</b></p> <p>Hex Nut M3 Groove (For Installation)</p> <p>4-M3 depth 4 (For Installation)</p> <p><b>REC2-266X30</b></p>
<p><b>13</b></p> <p>Hex Nut M3 Groove (For Installation)</p> <p>4-M3 depth 4 (For Installation)</p> <p><b>REC2-290X30</b></p>	<p><b>14</b></p> <p>Hex Nut M3 Groove (For Installation)</p> <p>4-M3 depth 4 (For Installation)</p> <p><b>REC2-386X30</b></p>
<p><b>15</b></p> <p>Hex Nut M3 Groove (For Installation)</p> <p>4-M3 depth 4 (For Installation)</p> <p><b>REC2-434X30</b></p>	<p><b>16</b></p> <p>Hex Nut M3 Groove (For Installation)</p> <p>4-M3 depth 4 (For Installation)</p> <p><b>REC2-578X30</b></p>